

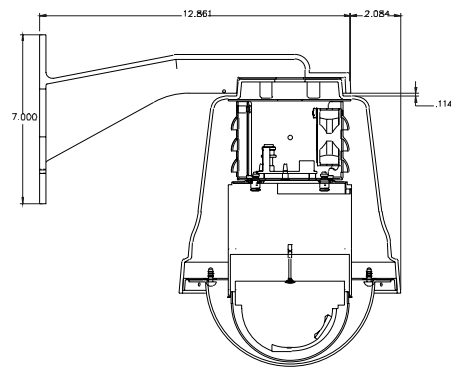
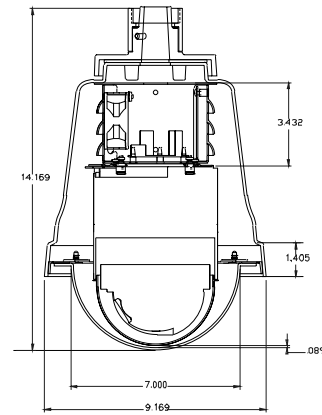
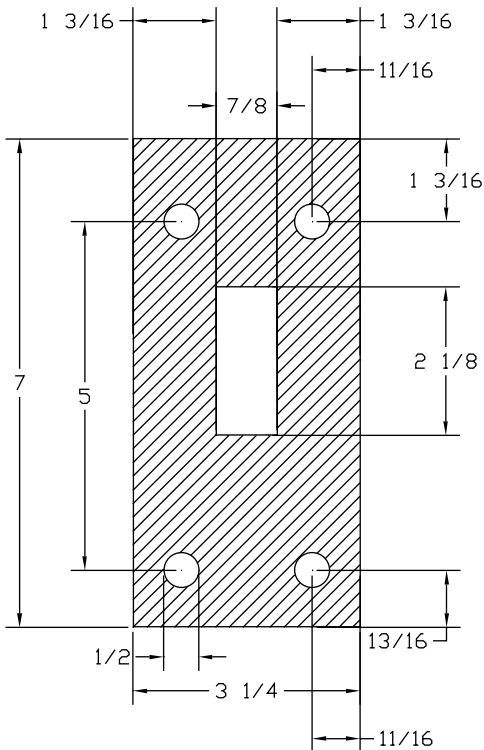
POD7CW Outdoor Dome Housing

Product Features

- Wall mount style (options available for corner/pole and parapet mount styles)
- Easy installation when connecting the cable to the camera
- 24H fan operation for effective heating and condensation protection
- 24VAC heater for low power installation
- Surge protection for video line and power
- Ground-loop protection by optional unit INBT1621 (Isolation Transformer)
- Optically clear dome material



POD7CW Wall Mount Detail



POD7CW Outdoor Dome Housing

GENERAL SPECIFICATIONS

Upper Housing	0.250" high impact UV stable white plastic
Housing Bracket	14 gauge steel
Lower Dome	7" acrylic—distortion free
Unit Weight	Camera 4.4 lbs.—dome housing 6 lbs.
Environmental	-20° to 120°F
Heater	On at 40°F off at 60°F (±5°) 50W AC
Blower	Continuous 0.11A
Surge Protector	Video clamping: differential mode 24–36V; common mode 54–72V; power clamping: 240–300V
Ground Loop Isolator	(Optional) Model No.: INBT1621
Bandpass	60Hz hum rejection: 1000V p-p
Insertion Loss	10Hz to 25MHz
Standard Accessories	0.3dB Molex Female pin Molex 39-01-3043 Security tool (toolhead driver) Screw for camera mount bracket (4 pcs.) Screw for lower housing bracket (2 pcs.) Screw for safety (1 pc. w/flat and lock washer)

Weights and dimensions shown are approximate.
Specifications subject to change without notice.

OPTIONAL ACCESSORIES FOR POD7CW

PCA2 Corner Mount Adaptor



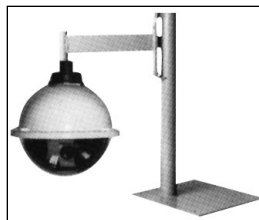
The PCA2 is designed for outdoor use and for mounting to a corner when used in conjunction with the POD7CW.

PPM3 Pole Mount Adaptor



The PPM3 is designed for outdoor use and for mounting to a pole when used in conjunction with POD7CW. This unit is mounted to a pole by stainless steel straps.

PSRCW2000 Parapet, Roof Top Mount Bracket



The PSRCW2000 is a heavy-duty outdoor bracket designed for use with outdoor dome housing POD7CW. This unit is designed for mounting to a parapet or roof top.

ARCHITECTS' AND ENGINEERS' BID SPECIFICATIONS

POD7CW

The outdoor dome camera housing with wall mount shall be a Panasonic Model POD7CW or equivalent. The housing shall be designed for the Unitized Surveillance Device Series WV-CS654/CS404/BS304/BS504. The housing shall be constructed of UV stable white plastic, steel and acrylic. The lower dome portion shall be constructed of distortion-free acrylic and not exceed 7" in diameter. The housing shall include a camera mounting bracket that integrates a heater, blower, video and power surge protector capable of clamping differential mode voltage between 24-36V and common mode voltage from 54-72V. A ground isolation transformer, Panasonic Model INBT1621, shall be available as an option. The housing shall support a temperature range of 20 to 120°F. The housing shall include an integral wall mount with four (4) mounting holes in a 5"H x 2"W mounting pattern. The integral wall mount shall be compatible with the PPM3 pole mount adaptor, PCA2 corner mount adaptor and PSRCW2000 parapet mount adaptor for the aforementioned mounting options.