

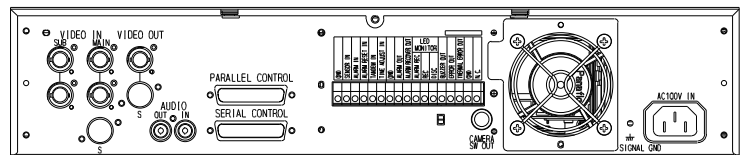
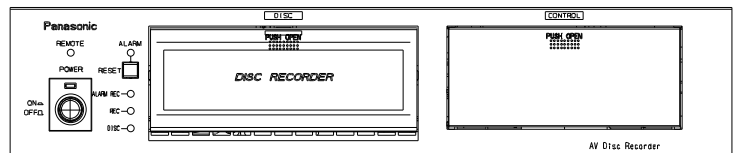
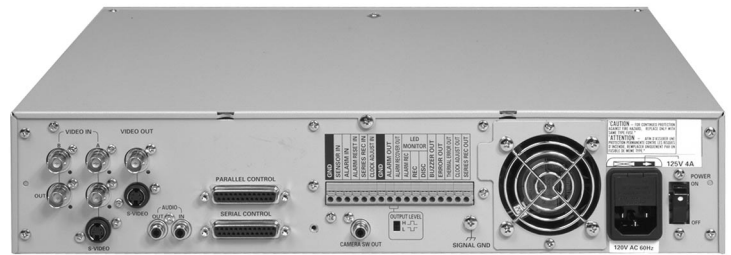
**WJ-DR200 DVD Recorder**

**Product Features**

- Capture important incidents and events
- Video sampling: 720H x 480V/  
720H x 240V (memory pixel),  
Y:U:V=4:2:2
- 3-D scan conversion enable stabilized  
picture without blurring for moving  
objects in a single frame
- 3 recording modes including:  
single-shot, multi-shot and time-lapse  
recording
- Built-in video memory enables  
pre-alarm recording (past view)
- 2 camera inputs can capture a single  
object from different angles
- 3 search modes: direct search, list  
search and thumbnail search

The Panasonic model WJ-DR200 Digital Video Recorder uses DVD-RAM storage media to record single-shot or multiple images periodically or in the event of alarm conditions. Pre-alarm recordings capability permits the WJ-DR200 to maintain a buffer of up to 40 video images before or after an alarm condition. This allows retrieval of images critical to alarm investigation.

The WJ-DR200 features JPEG compression and a high picture quality frame capturing capability with its 4:2:2 video sampling. The WJ-DR200 features 3 recording modes—single-shot, multi-shot and time-lapse recording. 3 search modes are provided—direct, list and thumbnail allow fast and easy playback search. With 2.6G bytes of recording memory per side of each DVD-RAM cartridge, the recorder can capture objects at a maximum rate of 30 frames per second.

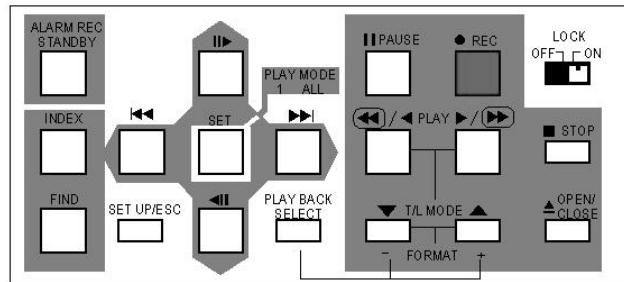


### WJ-DR200 DVD Recorder

#### GENERAL SPECIFICATIONS

<b>Recording Capacity</b>	2600M bytes (2.6G) (4 times better than rewritable PD or CD)
<b>Pixel and Sampling</b>	720H x 480V, 720H x 240V, Y:U:V=4:2:2
<b>Compression</b>	JPEG 1/6, 1/10, 1/16, 1/25
<b>Maximum Recording Rate</b>	15 frames/sec.
<b>Recording Time at 1/16</b>	15 f/s: 31 minutes; 5 f/s: 93 minutes
<b>Alarm Record Timing (Receiving)</b>	Approximately 0.3 sec.
<b>Application</b>	Event recording purposes
<b>Dimensions</b>	3 <sup>1</sup> / <sub>8</sub> "H x 16 <sup>5</sup> / <sub>16</sub> "W x 14 <sup>1</sup> / <sub>2</sub> "D

Weights and dimensions shown are approximate. Specifications subject to change without notice.



WJ-DR200 Front Panel Diagram

### ARCHITECTS' AND ENGINEERS' BID SPECIFICATIONS

#### WJ-DR200

The digital video recorder shall be a Model WJ-DR200 or equivalent, as manufactured by Panasonic Video Imaging Systems Company. The digital recorder shall use DVD-RAM disk media, with a digital format capacity of 2.6MB per side. The WJ-DR200 shall include 720(H) x 480(V) (pixel memory) sampling and 3-D scan conversion to enable stabilized pictures in a single frame. JPEG compression shall be provided at 1/6, 1/10, 1/16 and 1/25 levels. The digital video recorder shall include single-shot, multi-shot and time-lapse recording modes. Each recording mode shall be able to be manually activated, activated via RS-232C interface, or automatically activated in the event of an alarm condition. Up to 40 pictures shall be able to be recorded prior, during and after a specific alarm condition. Direct, list and thumbnail search features shall be provided for enhanced search capabilities. Rough, fine and super fine recording modes shall be included, as well as recording field rates of 30, 15 and 5 fields per second. The WJ-DR200 shall permit direct camera selection (without an external decoding device) of multiple video sources recorded with Panasonic WJ-FS216 and WJ-FS616 multiplexers. The digital video Recorder shall have a power source of 120VAC (50/60 Hz) and be UL listed.