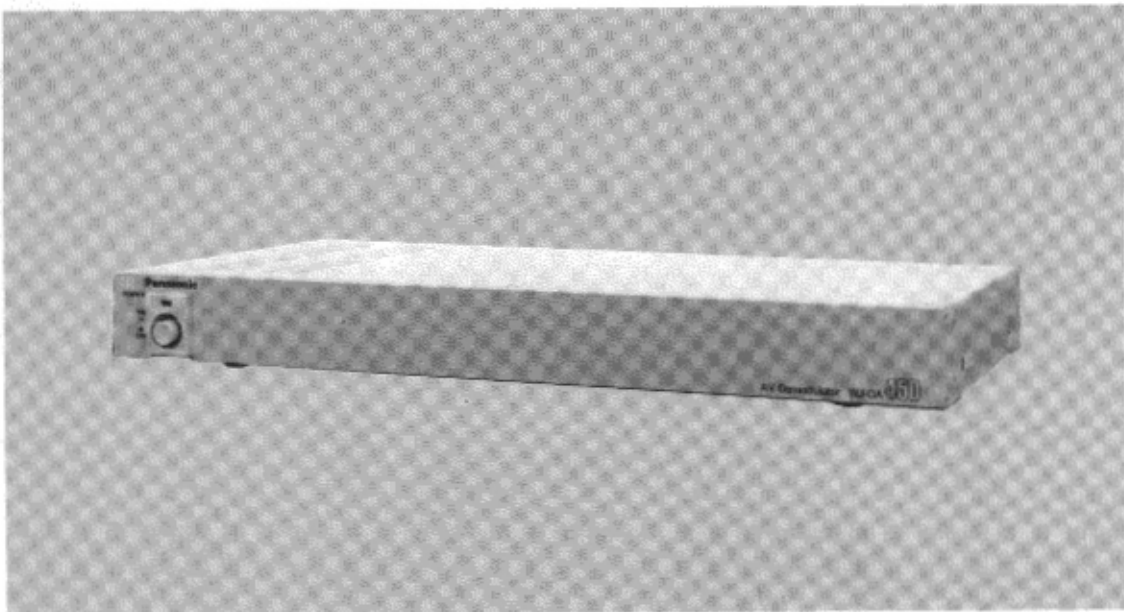


Operating Instructions

AV Demodulator
WJ-DA450

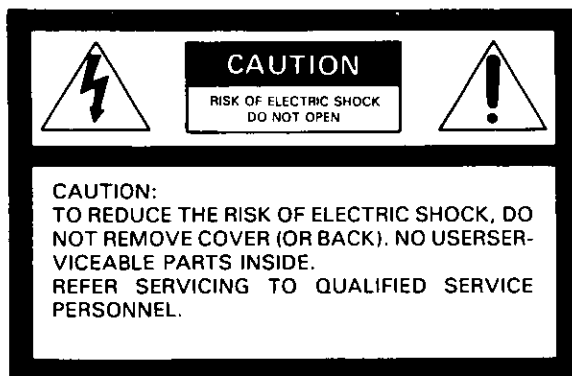


Panasonic[®]

Before attempting to connect or operate this product, please read these instructions completely.

CONTENTS

PREFACE	2
FEATURES	2
PRECAUTIONS	2
MAJOR COMPONENTS AND THEIR FUNCTIONS	3
SYSTEM CONNECTION	4
SPECIFICATIONS	5
OPTIONAL ACCESSORIES	5



The lightning flash with arrowhead symbol, within an equilateral triangle, is intended to alert the user to the presence of uninsulated "dangerous voltage" within the product's enclosure that may be of sufficient magnitude to constitute a risk of electric shock to persons.



The exclamation point within an equilateral triangle is intended to alert the user to the presence of important operating and maintenance (servicing) instructions in the literature accompanying the appliance.

For U.S.A.

Warning:
This equipment generates and uses radio frequency energy and if not installed and used properly, i.e., in strict accordance with the instruction manual, may cause harmful interference to radio communications. It has been tested and found to comply with the limits for a Class A computing device pursuant to Subpart J of Part 15 of FCC Rules, which are designed to provide reasonable protection against such interference when operated in a commercial environment.

For CANADA

This digital apparatus does not exceed the Class A limits for radio noise emissions from digital apparatus set out in the Radio Interference Regulations of the Canadian Department of Communications.

The serial number of this product may be found on the bottom and rear covers of the unit. You should note the serial number of this unit in the space provided and retain this book as a permanent record of your purchase to aid identification in the event of theft.

Model No. WJ-DA450

Serial No. _____

WARNING:
TO PREVENT FIRE OR SHOCK HAZARD, DO NOT EXPOSE THIS APPLIANCE TO RAIN OR MOISTURE.

PREFACE

The Panasonic AV Demodulator WJ-DA450 is used to obtain the separated audio and video output from the multiplexed audio/video signal in the multi-system application of the System Controller/WV-CU254 and the Receiver WV-RC100/WV-RC150.

The output audio and video signals are fed to the Audio/Video monitors for monitoring. Up to 4 multiplexed signals (4 sites) can be connected in maximum per unit. Up to 3 units of WJ-DA450 can be connected in series to make enable monitoring at 3 places.

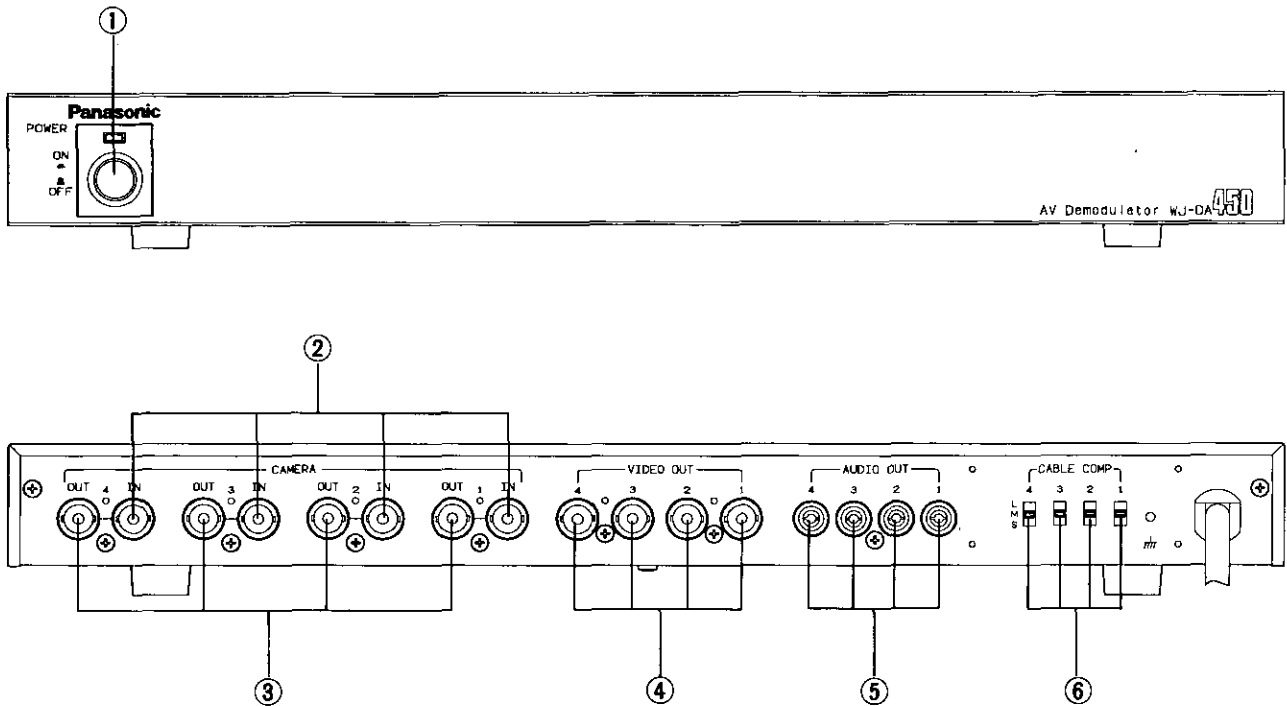
FEATURES

- 4 Multiplexed Camera Inputs for Monitoring.
- 4 Multiplexed Camera Outputs (Loop-through) for other units of WJ-DA450.
- 3-step Cable-loss Compensation switches for each input.

PRECAUTIONS

- Do not attempt to disassemble the instrument. In order to prevent electric shock, do not remove screws or covers. There are no user-serviceable parts inside. Do refer all servicing to qualified service personnel.
- Do not abuse the instrument. Avoid striking, shaking, etc. It could be damaged by improper handling or storage. Do handle the instrument with care.
- Do not use strong or abrasive detergents when cleaning the instrument body. Do use a dry cloth to clean the instrument when dirty. In case the dirt is hard to remove, use mild detergent and wipe gently.
- Do not expose the instrument to water or moisture, and do not operate it in wet area. Do take immediate action if ever the instrument does become wet. Turn the power off and refer servicing to qualified service personnel. Moisture can damage the instrument and also create the danger of electric shock.
- Do not use the instrument in an extreme environment where high temperature or high humidity exist. Use the instrument under conditions where temperatures are within -10°C - 50°C , and humidity is below 95%.

MAJOR COMPONENTS AND THEIR FUNCTIONS



1. Power ON/OFF Switch. (POWER)

2. Camera Input Connectors (CAMERA IN 1/2/3/4)

Accept the multiplexed camera signal from the Receiver WV-RC100/WV-RC150. (Via the System Controller/WV-CU254)

When no coaxial cable is connected to the Camera Output Connectors (3), the multiplexed camera signal is terminated with 75 ohms.

3. Camera Output Connectors (CAMERA OUT 1/2/3/4)

When the coaxial cable(s) with the BNC connector(s) is (are) connected to this (these) connector(s), the multiplexed camera signal(s) fed to the Camera Input Connector(s) (2) is (are) obtained at this (these) connector(s) for other unit(s) of WJ-DA450 or WV-CU254 by looping through.

4. Video Output Connectors (VIDEO OUT 1/2/3/4)

The camera video signals separated from the multiplexed camera signals are obtained at this connector.

Note :

The control data signal is contained in the vertical blanking period of the output video signal.

5. Audio Output Connectors (AUDIO OUT 1/2/3/4)

The audio signal separated (Demodulated) from the multiplexed camera signals are obtained at this connector.

6. Cable-loss Compensation Switches (CABLE COMP, 1/2/3/4, L/M/S)

These switches are used to set the most suitable position of the cable-loss compensator for each camera input signal. The video output signals at the Video Output Connector (4) compensated beside that of the Camera Output Connectors (3) are not compensated at all.

The suitable switch position and its approximate cable length are as follows.

S: up to 400 m

M: 400 m to 700 m

L: 700 m to 900 m

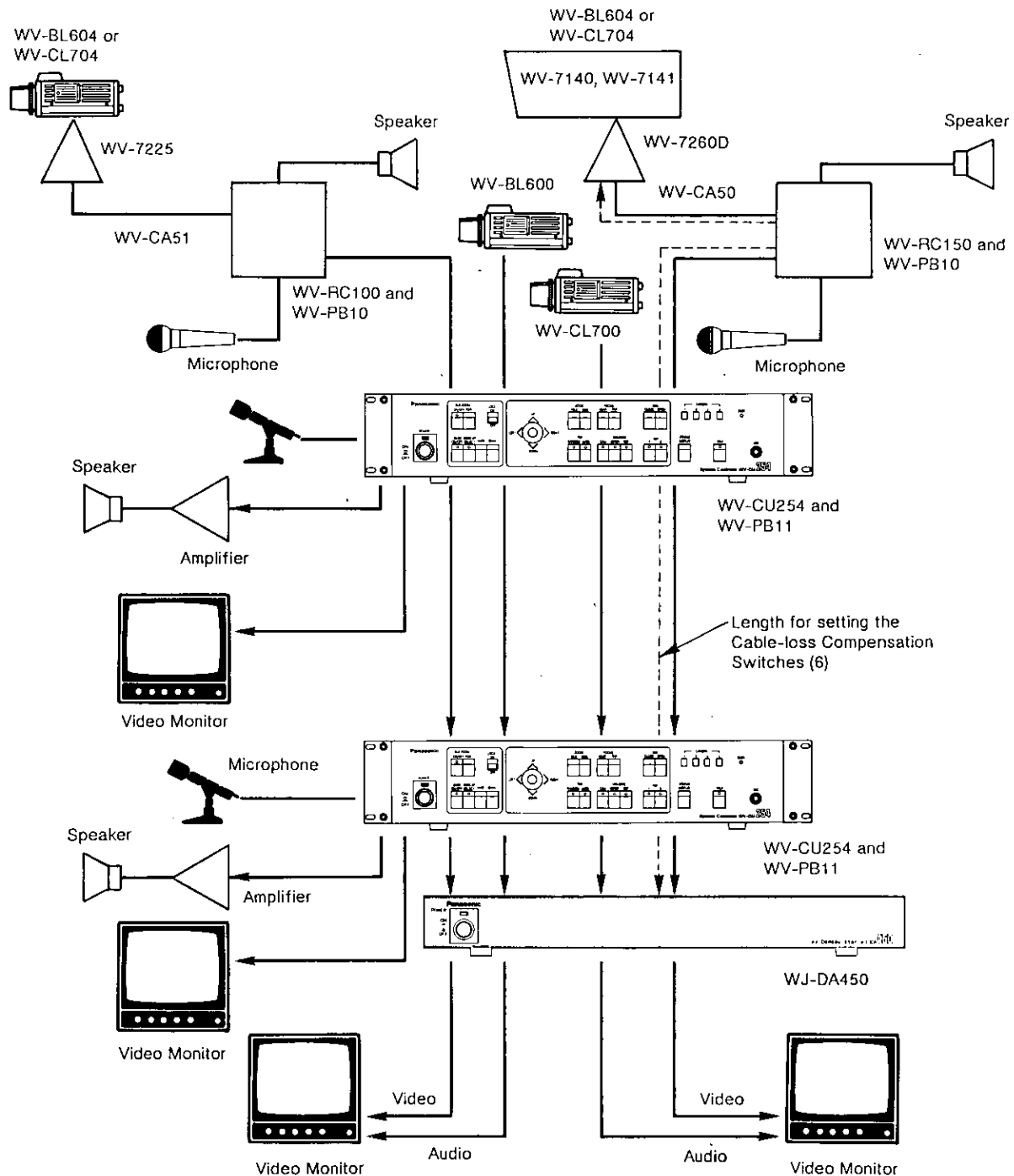
(with RG-59U (BELDEN 9259 or equivalent))

CAUTION :

Refer to page 4 for system connection and its maximum cable length.

SYSTEM CONNECTION

- Connect the coaxial cable(s) with BNC Connectors between the Camera Input Connector(s) (2) and the Camera Output Connector(s) of the System Controller WV-CU254.
- Connect the coaxial cable(s) with BNC Connector between the Video Output Connector(s) (4) and the Video Input Connector(s) of the Video Monitor(s).
- Connect the audio cable(s) between the Audio Output Connector(s) (5) and the Audio Input Connector(s) of the Video Monitor(s).
- When two or three units of WJ-DA450 are to be used, connect the coaxial cable(s) with BNC connectors between the Camera Output Connector(s) (3) of the first unit of WJ-DA450 and the Camera Input Connector(s) (2) of the second unit of WJ-DA450.



Typical System Connection

SPECIFICATIONS

Power Source :	120V AC, 60 Hz
Power Consumption :	10W
Television System :	NTSC or EIA standard system
Camera Input 1-4 :	1.0 Vp-p/75 ohms composite video signal, 0.5 Vp-p/75 ohms data signal and 0.13 Vp-p/75 ohms FM audio signal are multiplexed. (FM Carrier Frequency 11.2 MHz)
Camera Output 1-4 :	Looping Through output of the Camera Input 1-4
Video Output 1-4 :	1.0 Vp-p/75 ohms composite Video signal
Audio Output 1-4 :	Demodulated — 10 dBV/10 kohms Audio signal
Connectors :	CAMERA IN : BNC connector x 4 CAMERA OUT : BNC connector x 4 (Automatic Termination) VIDEO OUT : BNC connector x 4 AUDIO OUT : RCA-pin Jack x 4
Dimensions :	16-1/2"(W) x 1-11/16"(H) x 8-13/16"(D) [420(W) x 44(H) x 225(D) mm]
Weight :	6.6 lbs (3 kg)

OPTIONAL ACCESSORIES

System Controller :	WV-CU254
Receiver :	WV-RC100 WV-RC150
Audio Board :	WV-PB10 (for WV-RC100/WV-RC150) WV-PB11 (for WV-CU254)

Panasonic

Communications & Systems Company

Panasonic Communications & Systems Company
Division of Matsushita Electric Corporation of America

CLOSED CIRCUIT VIDEO EQUIPMENT DIVISION

HEADQUARTERS:

50 Meadowland Parkway, Secaucus, New Jersey 07094

EASTERN ZONE:

50 Meadowland Parkway, Secaucus, NJ 07094 (201) 348-7620

CENTRAL ZONE:

425 E. Algonquin Road, Arlington Hts. IL 60005 (708) 981-4826

SOUTHERN ZONE:

Dallas Region: 4500 Amon Carter Blvd., Ft Worth, TX 76155 (817) 685-1117

Atlanta Region: 1854 Shackelford Ct. Suite 115, Norcross, GA 30093 (404) 925-6841

WESTERN ZONE:

Seattle Region: 1200 Westlake Ave. N., Suite 508, Seattle, WA 98109 (206) 285-8883

Los Angeles Region: 6550 Katella Ave., Cypress, CA 90630 (714) 373-7275

MATSUSHITA ELECTRIC OF CANADA LIMITED

5770 Ambler Drive, Mississauga, Ontario, Canada L4W 2T3 (416) 624-5010

PANASONIC SALES COMPANY

DIVISION OF MATSUSHITA ELECTRIC OF PUERTO RICO, INC.

San Gabriel Industrial Park, 65th Infantry, Ave. KM. 9.5 Carolina, Puerto Rico 00630 (809) 750-4300